

# Evaluation of International Medical Graduates' Experiences of PGY1 Transition-to-Residency Orientation

Petal S. Abdool<sup>1</sup>, Certina Ho<sup>1,2</sup>, Maaria Arif<sup>1,2</sup>, Joo-Young Lee<sup>1,2</sup>, Sanjeev Sockalingam<sup>1</sup>

<sup>1</sup>Department of Psychiatry, University of Toronto

<sup>2</sup>Leslie Dan Faculty of Pharmacy, University of Toronto

## BACKGROUND

- International Medical Graduates (IMGs) are a heterogenous group of trainees who face unique challenges such as issues related to communication, isolation, and culture.
- Current data reflecting IMG's perceptions of their Transition-to-Residency orientation and its applicability to their residency experience is lacking.

## METHODS

### Step 1

Invited all 29 IMG residents to participate in one of our two virtual focus groups, individual interviews, or submit their emailed responses to our questions



### Step 2

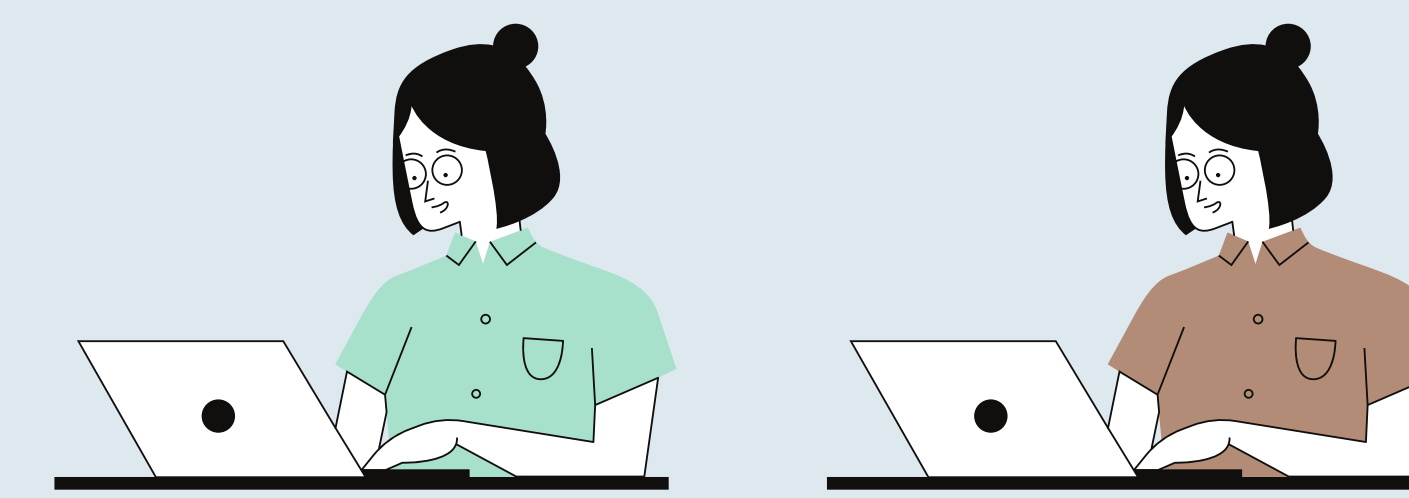
20 IMG residents participated



20 Residents  
Focus Groups: 8 IMGs in each group  
Individual Interviews: 4

### Step 3

Reviewed the response transcript by two independent analysts



### Step 4

Analyzed and summarized key themes and findings

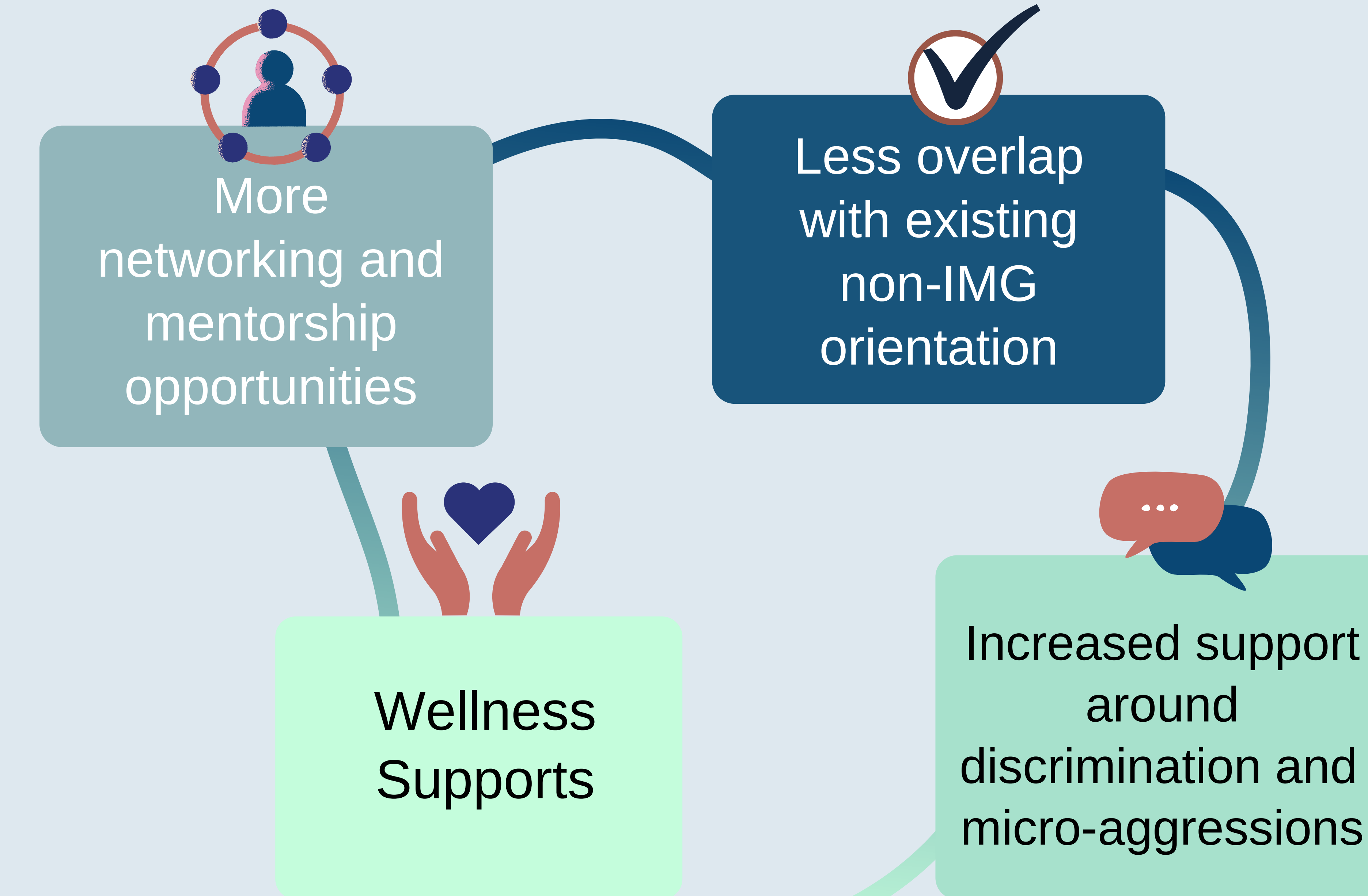


## OBJECTIVE

- Explore IMGs' experiences of their Transition-to-Residency orientation and investigate its implications for future sessions.

## RESULTS

Figure 1: Thematic Analysis of IMG Focus Groups and Interviews



## CONCLUSION

- Exploration of the IMG experience in relation to the orientation program revealed strengths and areas of improvement to support their transition into residency
- Ongoing provision of support in identified areas will better tailor the orientation program to IMG and in turn, elevate their residency experience



## ACKNOWLEDGEMENTS

The participation and contribution from the IMG psychiatry residents to our project was greatly appreciated by the authors.

## CONTACT

Dr. Petal S. Abdool, Assistant Professor, IMG Director, Department of Psychiatry  
Email: petal.abdool@camh.ca